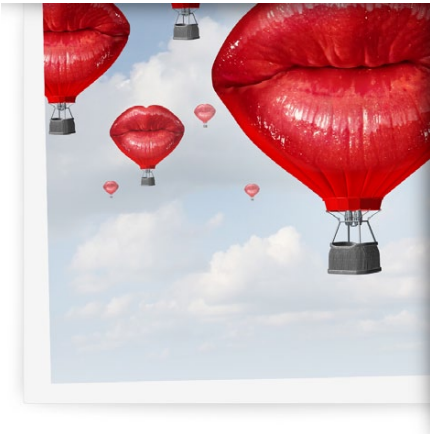


### Allure Photo Panel Troubleshooting Tips

---



#### IMAGE PRINTED CROOKED

---

Load the sheet straight. On Epsoms, try loading it by inserting the sheet without opening the roller release. You'll be prompted to press down (newer Epsoms) or Pause (older Epsoms). If skewing continues, turn off skew check in the preferences.



#### NOT FEEDING INTO PRINTER

---

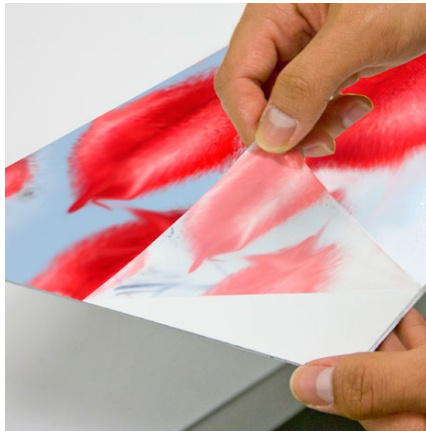
If using the down/pause button method (see above), you likely need to put pressure on the top of the sheet to make sure the rollers grab it.



#### PRINTS WITH BANDING

---

Make sure to set Microweave to **SUPER** in the Quality settings of the driver. With DoubleWeight Matte media type, we recommend **Max Quality**, which is 1440x720 Super Microweave On.



## PRINTED IMAGE IS SMEARING / BLOTCHY / WET

Make sure to

**remove the protective cling liner** from the photo panel before printing. With care, you may be able to remove a liner that has been printed on without any effect to the panel itself.



## I DON'T HAVE A PROFILE FOR MY PRINTER

Use DoubleWeight Matte ICC profile and Media Type from *Epson*. *If there isn't a DoubleWeight Matte option, use Ultra Premium Presentation Matte. You can also contact us for custom profiling options!*